

# Cutting Details

Fabric patches should be cut from the yardage as indicated below. Patches required for the wall quilt are white; the additional patches required for the twin quilt are shaded.

**A** = 6½" x 4"

**F** = 6¼" x 4"

**B** = 8¾" x 3¾"

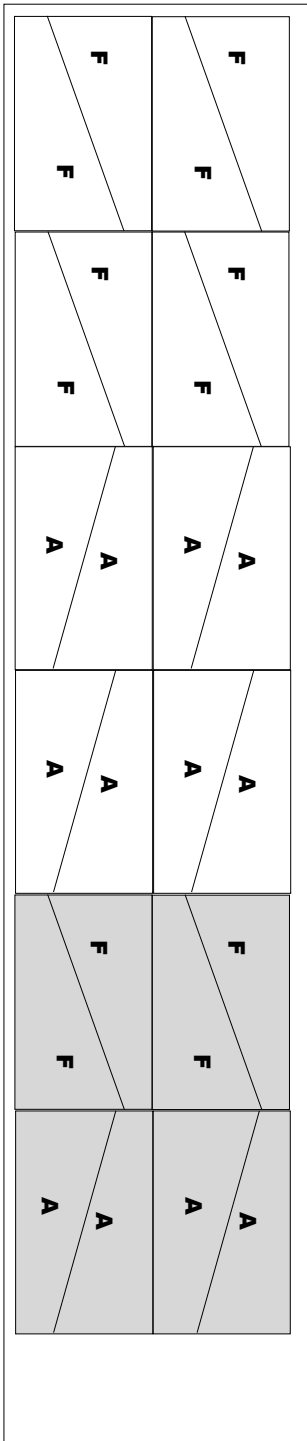
**E** = 8¼" x 3½"

**C** = 6¾" x 2¼"

**D** = 6¾" x 3½"

## Fabrics 1, 4, 7, 10

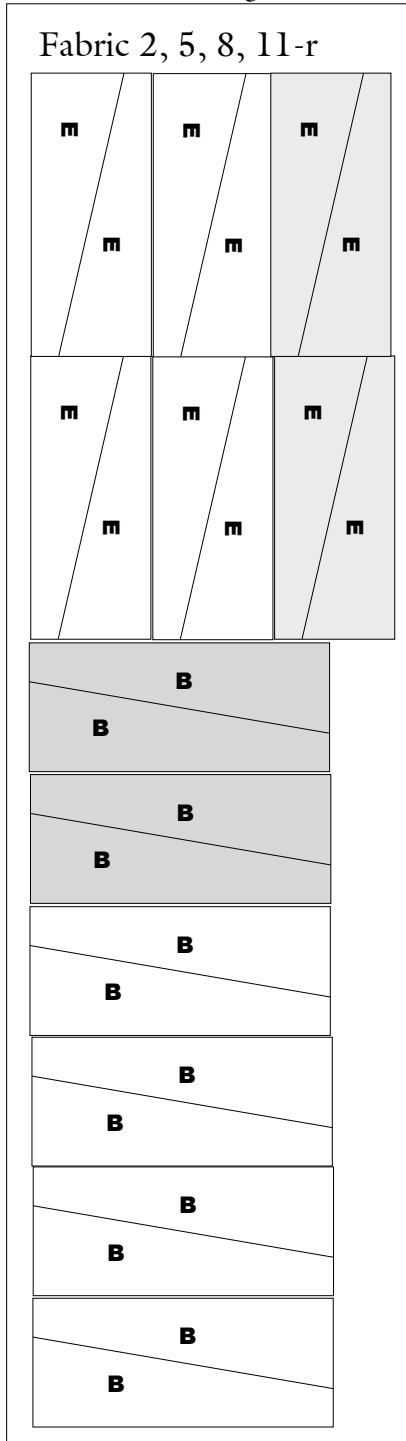
*Selvedge*



*Selvedge*

## Fabrics 2, 5, 8, 11

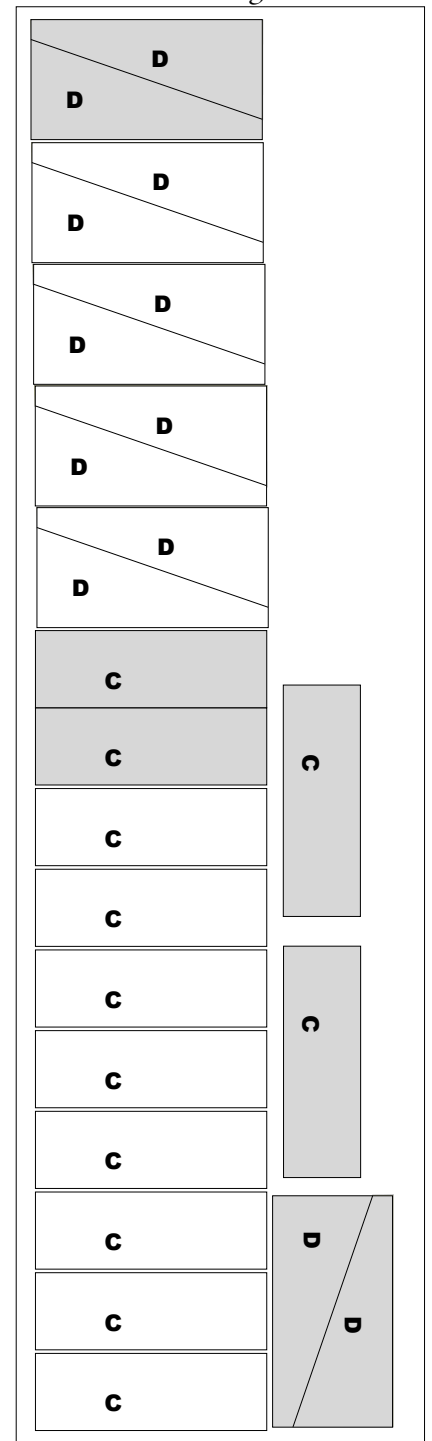
*Selvedge*



*Selvedge*

## Fabrics 3, 6, 9, 12

*Selvedge*



*Selvedge*